



Extended Services York and beyond **24th February 2009**

Eddie Needham
Yorkshire and the Humber
Regional Development Manager

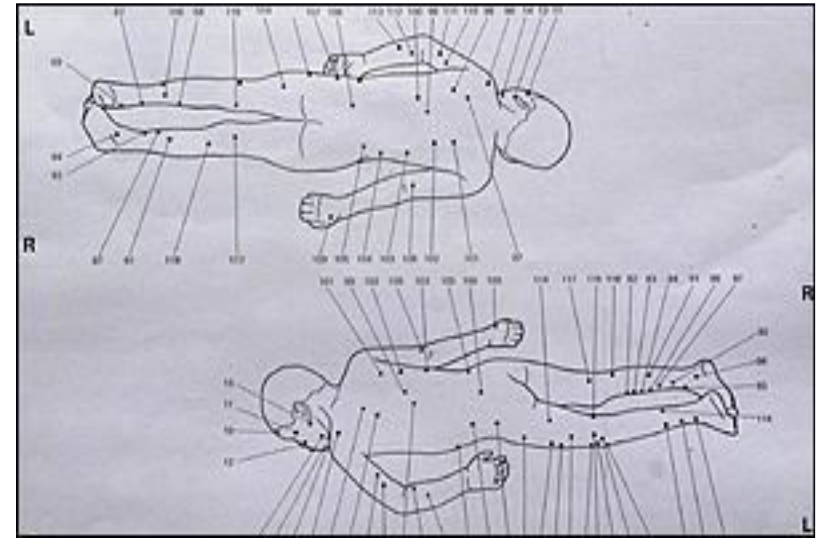


21st Century
Schools:
A World-Class Education
for Every Child

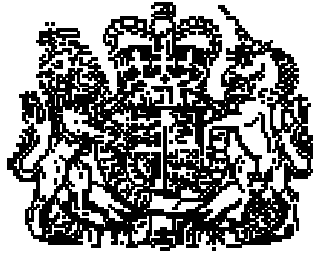


25 February 2000:

Victoria is declared dead
at 3.15pm at St Mary's
Hospital



Dr Nathaniel Carey, the Home Office pathologist who examines her body, finds 128 separate injuries and scars, many of them cigarette burns, and describes them as "the worst case of child abuse I've encountered"



THE VICTORIA CLIMBIÉ INQUIRY REPORT OF AN INQUIRY

BY LORD LAMING

*Presented to Parliament by the
Secretary of State for Health and
the Secretary of State for the Home
Department
by Command of Her Majesty
January 2003*



Extended services in and around schools

**A varied menu
of activities
and childcare**



**Parenting
support and
family learning**



**Swift and easy
access to
services**



**Community
access and
adult learning**



Full Core Offer (FCO) percentages for each GO region:

North East 77%

West Midlands 76%

Yorkshire and Humber 70%

South East 66%

London 65%

North West 63%

East Midlands 62%

East 58%

South West 57%

In Y&H we now have 1593 out of our 2266 schools providing access to the full core offer – this equates to 78% of secondary schools and 70% of primary schools.

Every LA in our region has exceeded the government's policy pledge of 50% of primary and 33% of secondary schools



DCSF want increased numbers achieving full core offer

- **AND to ensure quality**
- **AND sustainability**
- **AND to reach the most disadvantaged**
- **AND to ensure that no one is just ticking boxes**
- **AND the impact to be measured**



EXTENDED SCHOOLS

extra support for you and
your children



continyou
Changing lives through learning

School Overview - John Smeaton Community High School - Windows Internet Explorer

http://schoolsfinder.direct.gov.uk/3634045/overview/

Directgov
www.direct.gov.uk Public services all in one place

School, childcare and nursery finder

John Smeaton Community High School

Leeds Council
View map

School information

- School overview
 - School Profile
 - Ofsted information
- School performance summary
 - Key Stage 3 (Year 9)
 - 2007
 - 2006
 - 2005
 - GCSE and equivalent (Year 11)
 - 2007
 - 2006
 - 2005

School overview

Address: Smeaton Approach, Leeds, LS15 8TA

Telephone: 0113 2930484

Headteacher: Mr John Daulby

Type of school: Local Authority Maintained, special school, community
[Find out more about types of schools](#)

Pupil age range: 11 - 18

Gender: Mixed

Religious affiliation: Does Not Apply

Number of pupils: 1018

Nursery: No
[Search for more nursery options in your area](#)

Special needs: Has special needs provision **SN**

Extended services: Full range **E**
[What is the full range of extended services?](#)

Post-16 provision: Yes **16+**
[Find out more about post-16 education](#)

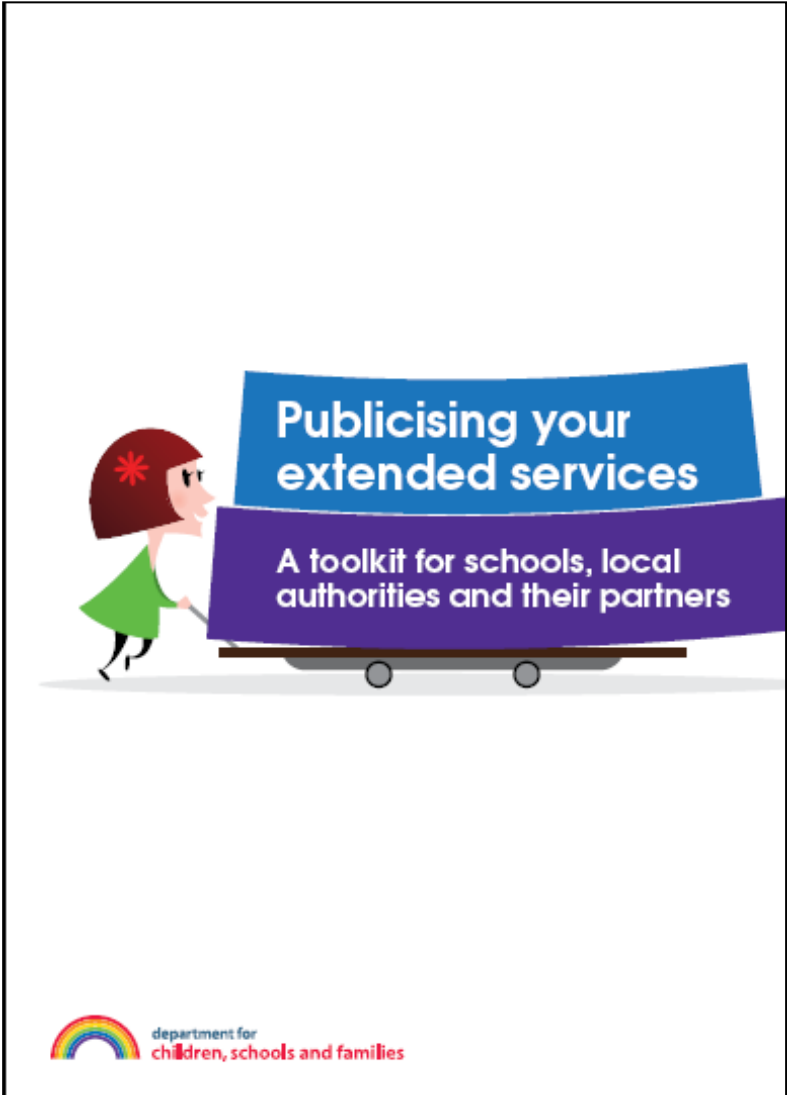
Specialisation: Not applicable

[Show all schools in this area](#)

[Tell us what you think](#)

http://schoolsfinder.direct.gov.uk/ Internet 100%





continyou
Changing lives through learning

Signposting



Unicef Report (1)



Health & safety

12th

Children born in wealthy nations now enjoy unprecedented levels of health and safety. Britain found itself ranked second behind Sweden as the place where children are least likely to die in an accident. However, this good performance was marred by the UK's relatively high infant mortality and low birthweight rates.

Poverty & inequality

18th

Despite being the fifth largest economy, Britain was ranked 18th for material well-being, beating only Ireland, Hungary and Poland. When it came to the number of children living in households where income was less than 50% of the national median, the UK beat only the US. British children were also among the most likely to have a jobless parent and in the bottom third for homes with fewer than 10 books.

Sex, drink & drugs

Last

The UK easily outstripped all other countries when it came to bad and risky behaviour. British children were more likely to have been drunk or had sex than those of any other country. The UK also had the second highest teenage fertility rate. British teenagers were much more likely to be involved in a fight in the past 12 months than other nationalities and more likely to have been bullied.

Unicef Report (2)

Happiness

20th

British children consider themselves the least content in the wealthy world. More than a fifth of UK youngsters said they rated their physical and mental health as poor - only Latvia, Russia and Lithuania fared worse. Girls reported lower levels of satisfaction than boys. UK youngsters were among the least likely to enjoy school or to rate their happiness levels as above average. Overall, they were the most likely to admit to feeling left out, awkward and lonely.

Family & friendships

Last

British children were found to have the worst relationships in the developed world. The UK had the second highest number of children living in single-parent families or with step-parents. Less than two-thirds of British families said they ate together regularly. Britain also came bottom of the industrialised national table when relationships among 11-15-year-olds were examined.

Education

17th

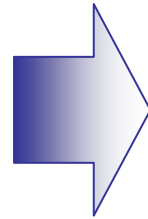
Regarded by Unicef as vital to a child's future life chances, Britain fared well when 15-year-olds' ability in reading, maths and science was assessed, ranking ninth. But the UK's overall position fell when its poor record in persuading pupils to stay on in education and training was taken into account.



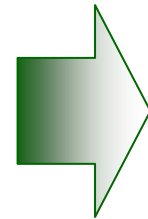
Towards a 3-dimensional view



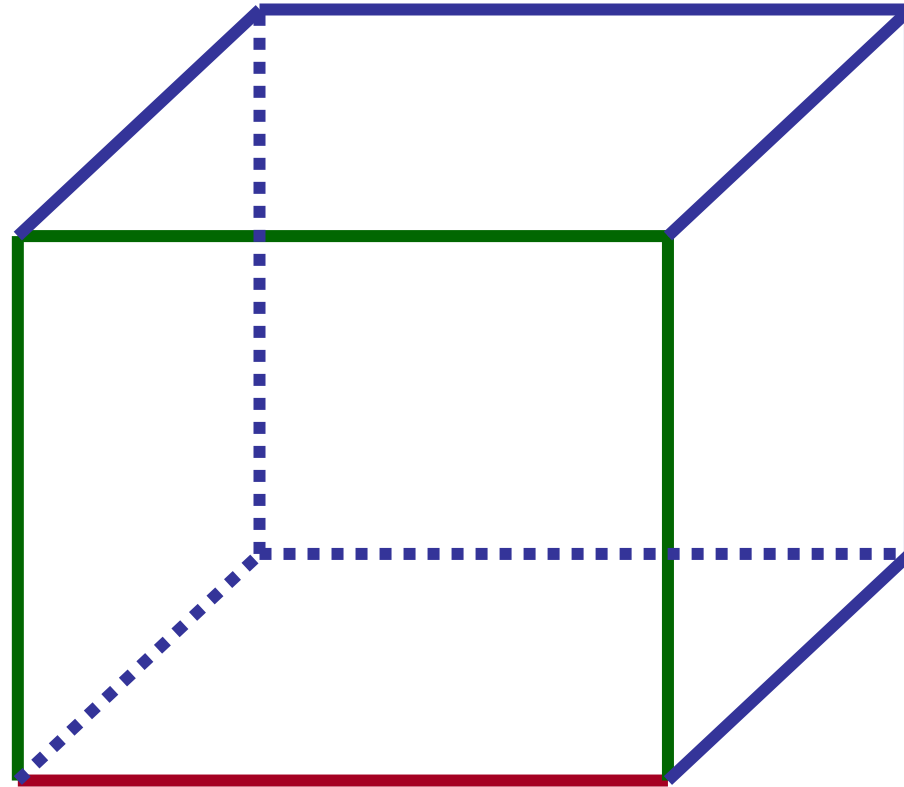
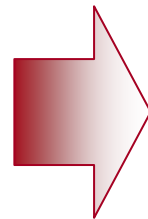
In the context of the whole community



Focus on the whole child



Focus on achievement



Who said ...?

...and when?

"OFSTED now concentrates on those whose circumstances make them vulnerable"

On raising standards and extended services:
"completely inter-dependent"..... "must be done multi-dimensionally, not one and then the other"

"Conditions for learning must be right"

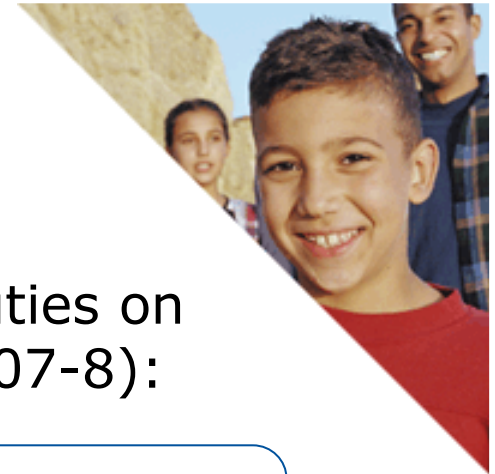
*"Extended **services** are making a real difference"....
"left in no doubt of a real impact"*





'Leaders who focus on
Every Child Matters
outcomes are seeing
standards rise – often off
plateaux where they have
been stuck for some time'

Scaling up – the challenge



The inspectors
(accountability)

Every local
authority

Locality
working for all

Process **and**
content

and now ...

Two new duties on
schools (2007-8):

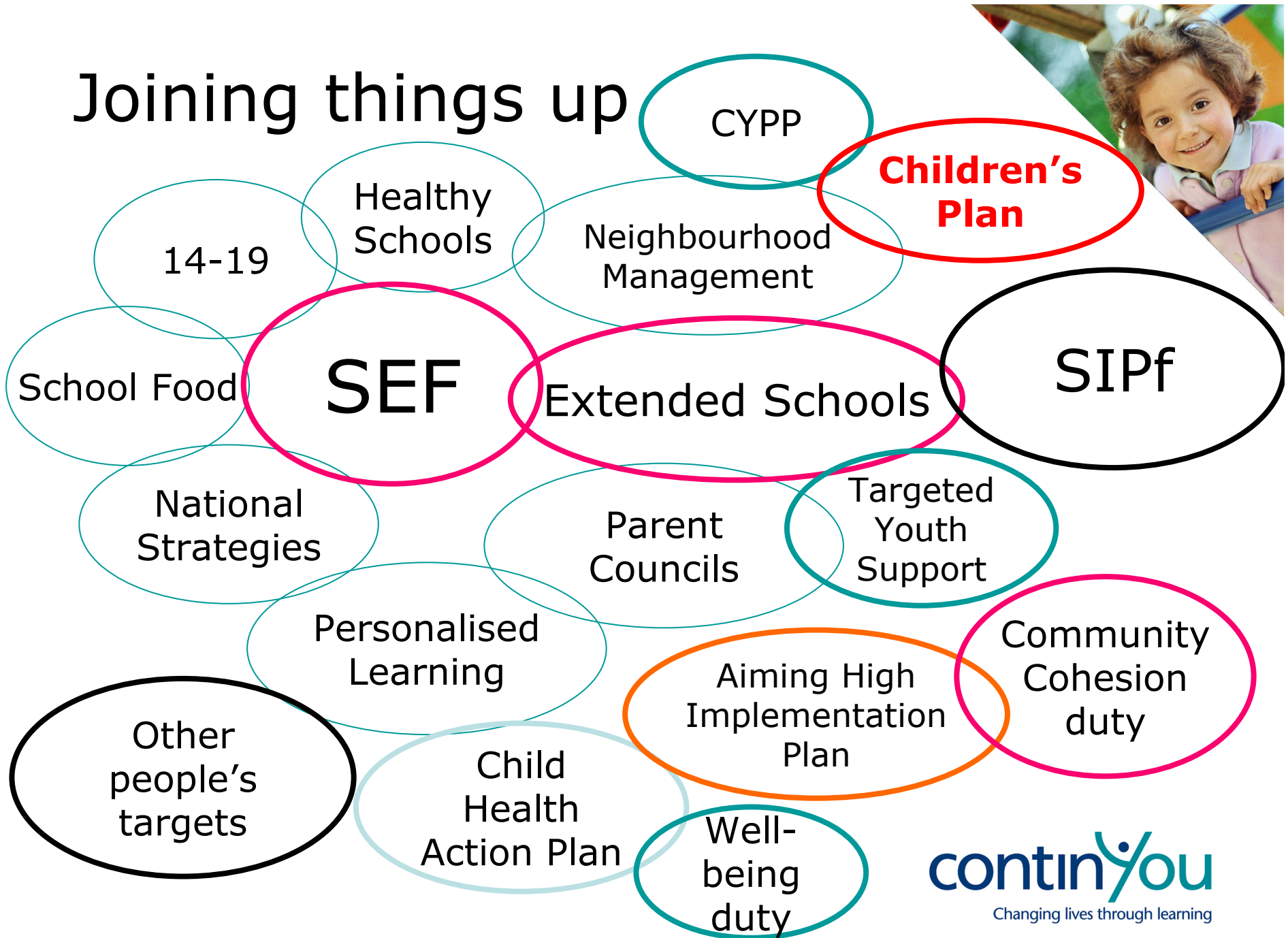
To promote
well being


To promote
**community
cohesion**

... and joining up with

**Children's
Centres** (for 0-5)

Joining things up





'Don't set up soup
kitchens but ask
why they need
soup'

*Joseph Rowntree's
philosophy*

continyou
Changing lives through learning



continyou
Changing lives through learning



continyou
Changing lives through learning



Extended Services

Eddie Needham

Yorkshire and the Humber
Regional Development Manager

eddie.needham@continyou.org.uk

Mobile: 0797 111 64 02